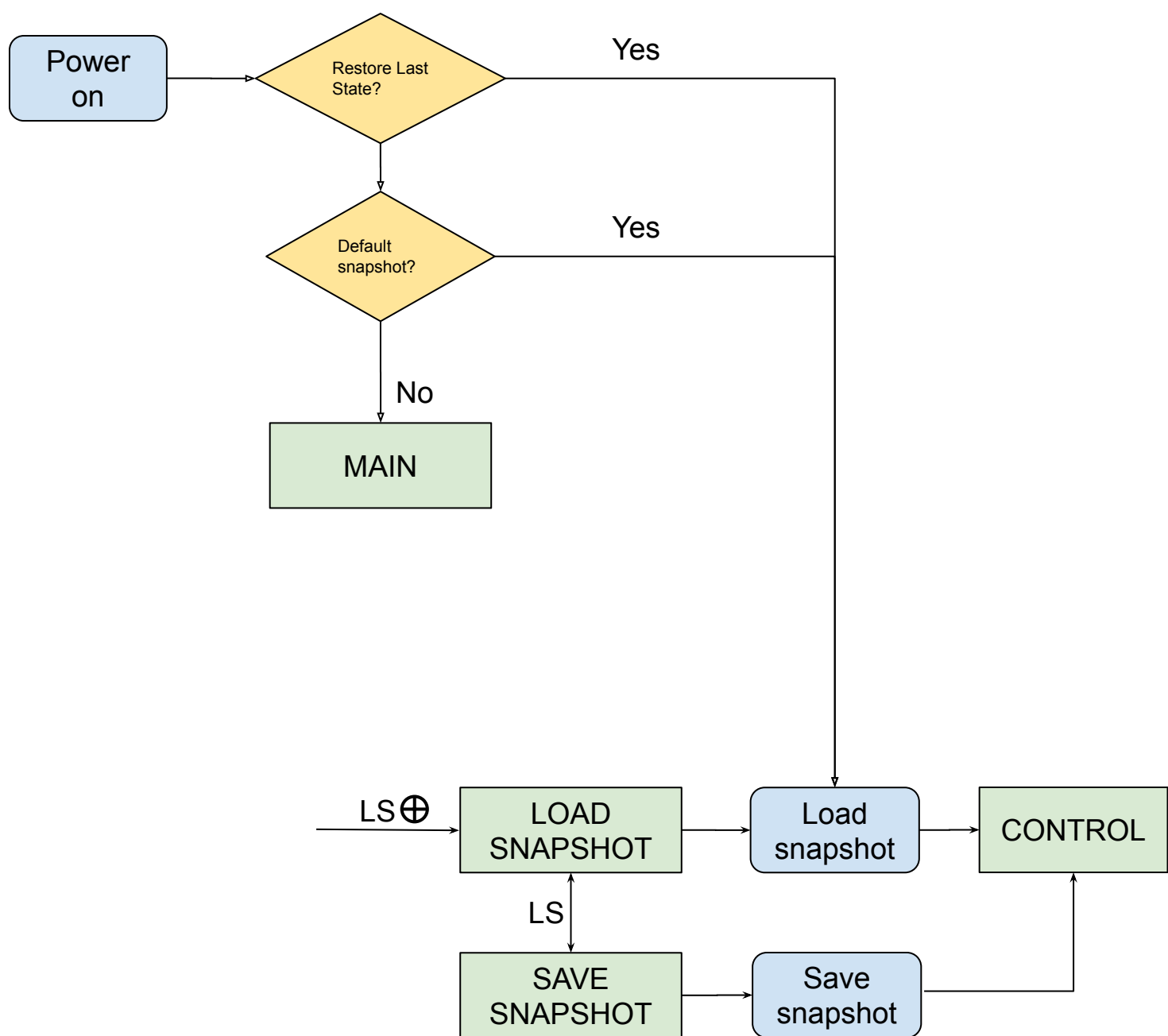


# Zynthian UI Workflow: Snapshots



## Legend



Action



Screen



Press **SELECT**



Press **LS / snapshot**



Press **BACK**



Press **CH / layer**



Bold Press ( 0.3 - 2 s)



Long Press (> 2 s)

**NOTE:** Back button flow lines are not shown for keeping clean the diagram. It can be used anywhere for returning to the precedent screen.